

一路同心 一路同行

ALL THE WAY, ALL THE WAY

2023

# 招商投资指南

INVESTMENT GUIDE TO TONGXIN COUNTY



中共同心县委员会  
同心县人民政府



# 目录

# Contents

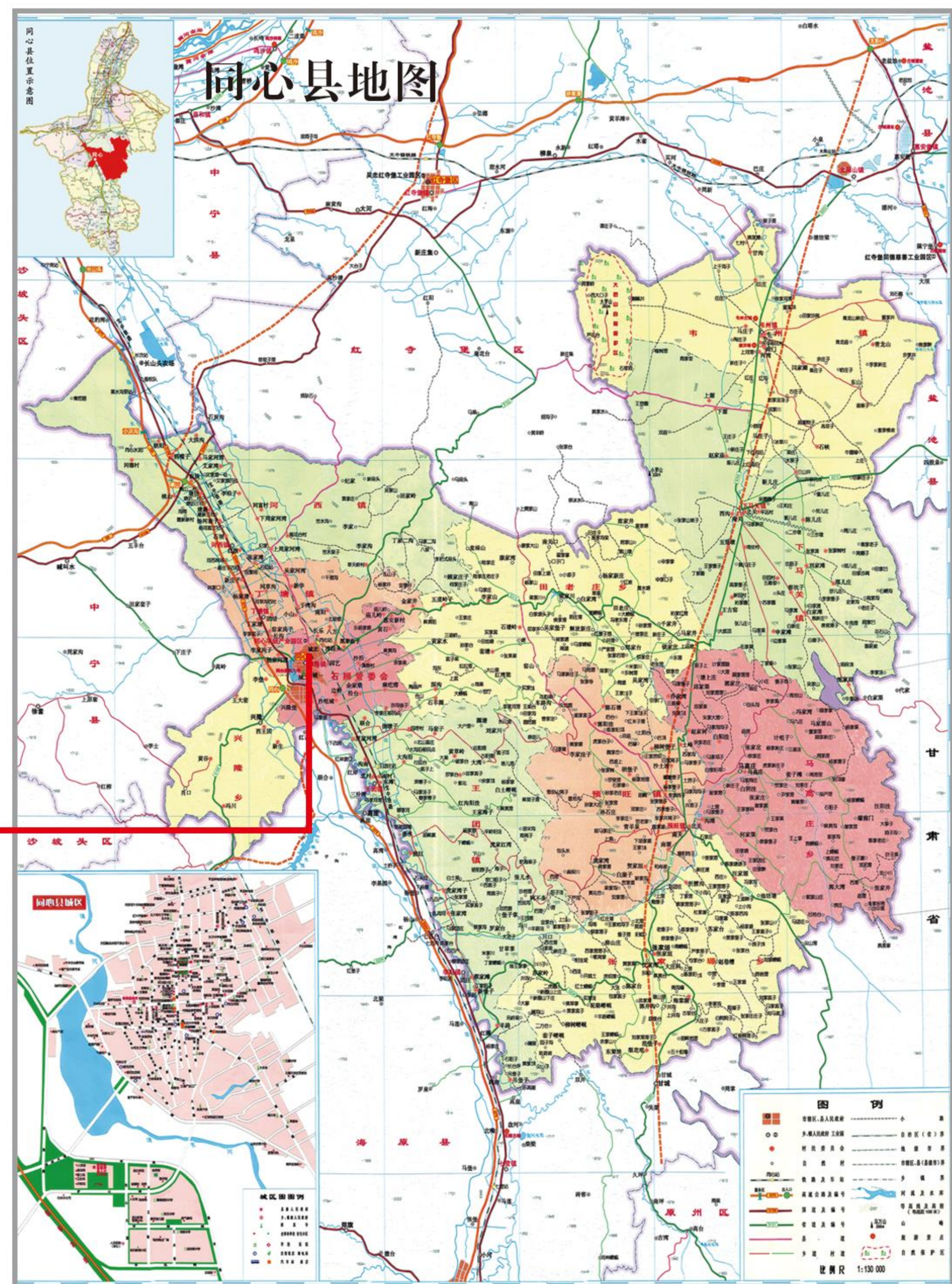
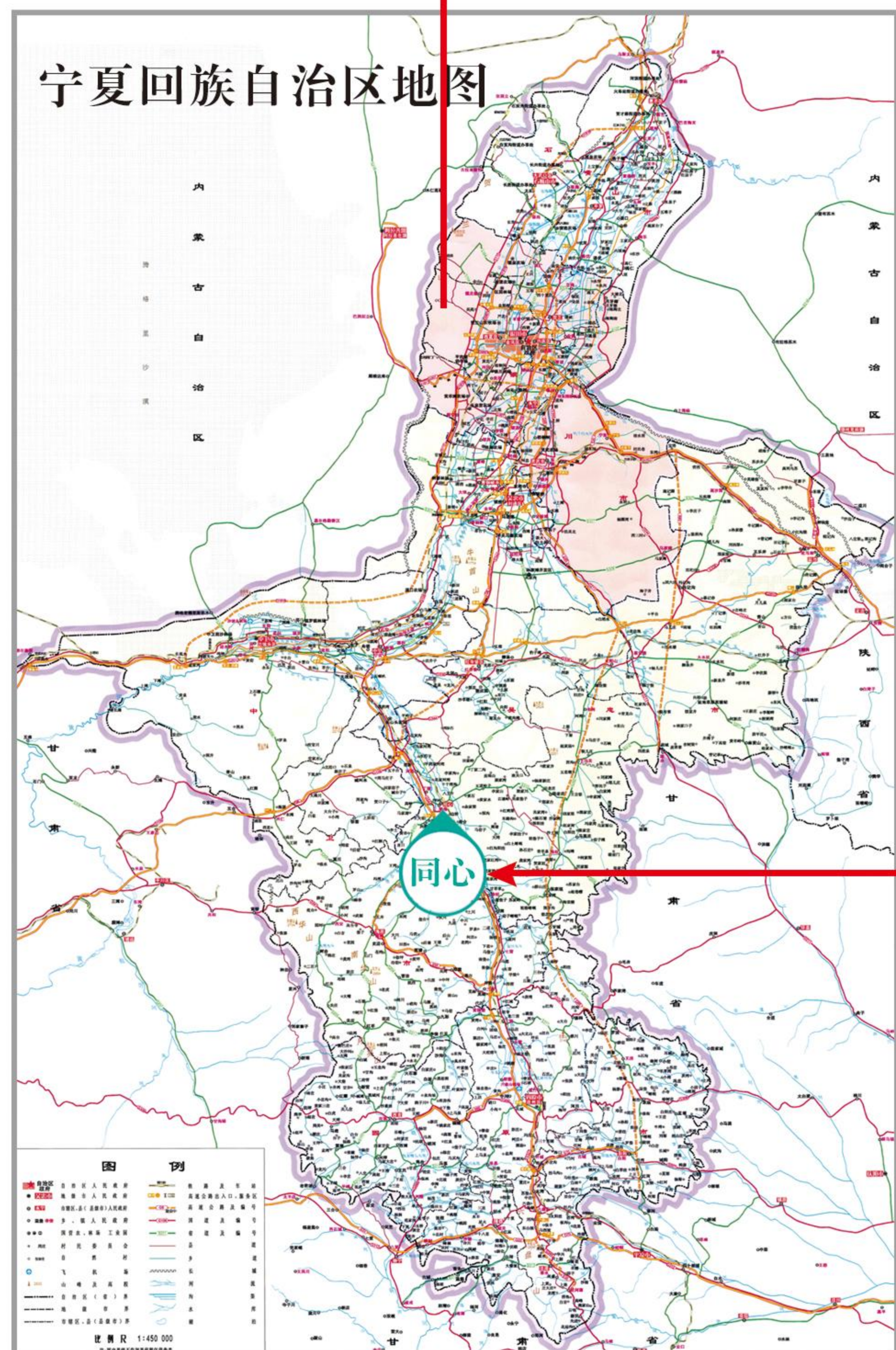
一、县情简介Introduction to County Situation .....	1
二、资源禀赋endowment .....	2
三、营商环境business environment .....	4
四、重点产业Key industries .....	6
01.现代化工产业Modern chemical industry .....	6
02.光伏产业photovoltaic industry .....	8
03.风电产业Wind power industry .....	10
04.现代纺织产业Modern Textile Industry.....	11
05.新型材料产业New Material Industry .....	12
06.枸杞产业Goji berry industry .....	13
07.肉牛、滩羊、奶牛产业Beef cattle, Tan sheep, and dairy industry..	14
08.玉米产业Corn industry .....	16
09.马铃薯产业potato industry .....	17
10.冷凉蔬菜产业Cold Vegetable Industry.....	18
11.电子商务产业E-Commerce Industry .....	19
12.现代物流Modern logistics .....	20
13.文化旅游产业cultural tourism industry .....	22
14.装备制造产业Equipment manufacturing industry...	25
15.葡萄酒产业wine industry .....	26
16.文冠果产业Wenguan Fruit Industry .....	28
17.健康养老产业Health and elderly care industry ...	29
五、承接平台Undertaking platform .....	30
六、优惠政策preferential policy .....	34
七、要素保障Element guarantee .....	44





## 县情简介

Introduction of county situation



**同心县**地处宁夏中部干旱带核心区，总面积4433.34平方公里，辖7镇4乡1个开发区，142个行政村，11个社区，总人口38.55万人，是全国民族团结进步示范县、乡村振兴重点帮扶县。1936年10月，同心县建立了全国第一个民族区域自治政权——陕甘宁省豫海县回民自治政府，开创了我国民族自治的先河，扩大了陕甘宁革命根据地，实现了红军三大主力一、二、四方面军的胜利会聚，埃德加·斯诺震惊世界的名著《红星照耀中国》（又名《西行漫记》），约四分之一的篇幅是在同心写成的。历史上，朱德、周恩来、彭德怀、邓小平等200多位共和国缔造者在这片热土上留下了光辉足迹，创造了不朽业绩。八一电影制片厂拍摄的同名电影《同心》生动再现了当年可歌可泣的历史。

**文化底蕴。**早在新石器时代就有人类在此活动，西汉时即设置县府，命名“三水县”，唐、宋、元、明、清代代都有建制，至今建县达2200多年。同心县既是唐蕃古道、丝绸之路经过之地，又是回汉各族人民交往、融汇的地方。始建于明代的同心清真大寺历史悠久，明王陵墓规模宏大，康济寺塔雄伟壮观，古长城绵延数十里，古生物化石种类繁多。各民族长期共同生活和互相影响，积淀了具有浓郁地方特色的历史文化、民族文化和红色文化。

**资源优势。**同心县耕地总面积147.92万亩，其中水浇地50.25万亩、旱耕地97.67万亩，林地88.1万亩，草地163.2万亩。煤炭、石灰石、白云岩储量均过亿吨，开采价值大。同心牛、羊肉味道鲜美，“同心圆枣”是中国驰名商标，有机枸杞、酿酒葡萄品质优良。同心交通便利，宝中电气化铁路贯通全境，福银、京藏、银昆高速公路及G109、G344、S203、S304穿境而过。罗山国家级自然保护区风光旖旎，22处革命遗址遍布全县，红军西征纪念馆是国家4A级景区。有机枸杞、肉牛滩羊、清洁能源、文化旅游等“六新六特六优”产业优势突出。

**发展成就。**近年来，在区、市党委和政府的坚强领导下，县委和县政府团结带领全县各族干部群众，立足新发展阶段、完整准确全面贯彻新发展理念、融入新发展格局，抢抓机遇，艰苦奋斗、务实苦干，全县经济社会较快发展、城乡面貌日新月异、社会和谐稳定、民族团结和睦、人民安居乐业。2022年，完成地区生产总值138.46亿元，增长4.2%；规上工业增加值增长5.3%；固定资产投资增长15.9%；完成社会消费品零售总额28.62亿元、增长0.1%；一般公共预算收入3.92亿元、增长18.3%；城乡居民可支配收入分别为30879元、13631元，增长6.3%、7.7%。

Tongxin County is located in the core area of the central arid zone of Ningxia, with a total area of 4433.34 square kilometers. It governs 7 towns, 4 townships, 1 development zone, 142 administrative villages, 11 communities, and a total population of 385500 people. It is a national demonstration county for ethnic unity and progress and a key assistance county for rural revitalization. In October 1936, Tongxin County established the country's first regional ethnic autonomy regime – the Hui Autonomous Government of Yuhai County, Shaanxi Gansu Ningxia Province, which pioneered ethnic autonomy in China, expanded the revolutionary base areas of Shaanxi Gansu Ningxia, and achieved the successful gathering of the three main forces of the Red Army, the First, Second, and Fourth Front Armies. Edgar Snow's world-shaking masterpiece "Red Star Over China" (also known as "Journey to the West"), About a quarter of the space is written in concentric circles. In history, over 200 founders of the Republic, including Zhu De, Zhou Enlai, Peng Dehuai, Deng Xiaoping, and others, have left glorious footprints and created immortal achievements in this hot land. The film "One Heart" produced by the Bayi Film Studio vividly reproduces the lamentable history of that time.

**Cultural heritage.** As early as the Neolithic Age, humans had been active here. During the Western Han Dynasty, a county seat was established and named "Sanshui County". It was established throughout the Tang, Song, Yuan, Ming, and Qing dynasties, and has been established for over 2200 years. Tongxin County is not only a place where the Tang and Tibetan ancient roads and the Silk Road pass through, but also a place where the Hui and Han ethnic groups interact and merge. The Tongxin Mosque, founded in the Ming Dynasty, has a long history. The Ming King's tomb is grand, the Kangji Temple Pagoda is magnificent, the ancient Great Wall stretches for dozens of miles, and there are various types of ancient fossils. Various ethnic groups have lived together and influenced each other for a long time, accumulating historical, ethnic, and red cultures with strong local characteristics.

**Resource advantages.** The total area of arable land in Tongxin County is 1.4792 million mu, including 502500 mu of irrigated land, 976700 mu of dry land, 881000 mu of forest land, and 1.632 million mu of grassland. The reserves of coal, limestone, and dolomite all exceed 100 million tons, with a high mining value. Tongxin beef and lamb taste delicious, and "Tongxin Yuanzao" is a well-known trademark in China. Organic goji berries and wine grapes have excellent quality. Tongxin has convenient transportation, and the Baozhong electrified railway runs through the entire area. The Fuyin, Beijing Tibet, Yinkun expressways, as well as G109, G344, S203, and S304 pass through the area. The Luoshan National Nature Reserve has beautiful scenery, with 22 revolutionary sites scattered throughout the county. The Red Army Western Expedition Memorial Park is a national 4A level scenic area. The advantages of the "six new, six special, and six excellent" industries such as organic goji berries, beef cattle and Tan sheep, clean energy, and cultural tourism are outstanding.

**Development achievements.** In recent years, under the strong leadership of the district and city party committees and governments, the county party committee and government have united and led the cadres and masses of all ethnic groups in the county, based on the new stage of development, fully and accurately implementing the new development concept, integrating into the new development pattern, seizing opportunities, working hard and pragmatically, achieving rapid economic and social development, rapidly changing urban and rural landscape, social harmony and stability, national unity and harmony, and people living and working in peace and contentment. In 2022, the total regional GDP reached 13.846 billion yuan, an increase of 4.2%; The added value of industries above designated size increased by 5.3%; Fixed assets investment increased by 15.9%; The total retail sales of consumer goods reached 2.862 billion yuan, an increase of 0.1%; The general public budget revenue was 392 million yuan, an increase of 18.3%; The disposable income of urban and rural residents was 30879 yuan and 13631 yuan respectively, an increase of 6.3% and 7.7%.



# 01

## 资源禀赋

### ENDOWMENT

同心土地广袤，属典型的温带大陆性气候，四季分明，日照充足，昼夜温差大（夏季10℃、冬季20℃左右），有效积温高（年平均2860℃），通风条件好，年日照时达3000小时，热量充足，土壤富硒含钙，是发展绿色、有机、富硒、生态农产品的理想之地。耕地总面积147.92万亩，其中水浇地50.25万亩、旱耕地97.67万亩，林地88.1万亩，草地163.2万亩。

Tongxin has a vast land and belongs to a typical temperate continental climate. It has four distinct seasons, abundant sunshine, large temperature difference between day and night (around 10 °C in summer and 20 °C in winter), high effective accumulated temperature (average annual temperature of 2860 °C), good ventilation conditions, and 3000 hours of sunshine per year. The soil is rich in selenium and calcium, making it an ideal place to develop green, organic, selenium rich, and ecological agricultural products. The total area of cultivated land is 1.4792 million mu, including 502500 mu of irrigated land, 976700 mu of dry land, 881000 mu of forest land, and 1.632 million mu of grassland.

同心牛、羊肉味道鲜美，“同心圆枣”是中国驰名商标，有机枸杞、酿酒葡萄品质优良。罗山国家级自然保护区风光旖旎，22处革命遗址遍布全县，红军西征纪念馆是国家4A级景区。同心县矿产资源丰富，开采价值高，已探明的矿种12种，能源矿产有炼焦用煤、非焦煤、煤气层，金属矿产冶镁白云岩，非金属矿产有石膏及各种石灰岩、溶剂用玻璃用白云岩等，县域及周边有丰富的煤炭、石膏、石灰岩等资源，其中煤炭资源总储量20.64亿吨，批复矿区面积约为194.63km<sup>2</sup>，规划煤矿规模990万吨/年。

Tongxin beef and lamb taste delicious, and "Tongxin Yuanzao" is a well-known trademark in China. Organic goji berries and wine grapes have excellent quality. The Luoshan National Nature Reserve has beautiful scenery, with 22 revolutionary sites scattered throughout the county. The Red Army Western Expedition Memorial Park is a national 4A level scenic area. Tongxin County is rich in mineral resources with high mining value. There are 12 kinds of proven minerals. Energy minerals include coal for coking, non coking coal, gas bed, metal mineral magnesium dolomite, non-metallic mineral gypsum and various limestone, solvent glass dolomite, etc. The county and its surrounding areas are rich in coal, gypsum, limestone and other resources, of which the total reserves of coal resources are 2.064 billion tons, and the approved mining area is about 194.63 km<sup>2</sup>, The planned coal mine scale is 9.9 million tons per year.

### 物产资源丰富 Rich natural resources

同心土地广袤，光照时间长，土地无污染。县域内煤炭、石膏、石灰石储量开采价值大，风力、光能资源十分丰富。

Tongxin Land is vast, with long exposure time and pollution-free land. The mining value of coal, gypsum, and limestone reserves within the county is high, and wind and solar energy resources are very abundant.



煤炭 | 光伏  
风电 | 石膏



# 02

## 营商环境

### BUSINESS ENVIRONMENT

#### 交通便利

#### CONVENIENT TRANSPORTATION

同心县位于宁夏回族自治区的几何中心，自古就是丝绸之路的交通要道，县域内交通便利，宝中铁路贯通全境，福银、京藏、银昆高速公路及G109、G344、S203、S304穿境而过。距离银川市220公里，距离兰州市230公里，距离西安市500公里，距离中卫沙坡头机场94公里，距离固原六盘山机场101公里，距离银川河东国际机场158公里。

Tongxin County is located in the geometric center of Ningxia Hui Autonomous Region and has been a transportation hub of the Silk Road since ancient times. The transportation within the county is convenient, with the Baozhong Railway running through the entire area. The Fuyin, Beijing Tibet, Yinkun expressways, as well as G109, G344, S203, and S304 pass through the area. 220 kilometers away from Yinchuan City, 230 kilometers away from Lanzhou City, 500 kilometers away from Xi'an City, 94 kilometers away from Zhongwei Shapotou Airport, 101 kilometers away from Guyuan Liupanshan Airport, and 158 kilometers away from Yinchuan Hedong International Airport.



#### 环境宜居宜业

#### Environmentally livable and suitable for business

同心县自古就是多民族长期共同生活、互相影响、和睦相处的地方，交流交融、和谐和顺、开放发展始终是这块土地上的主旋律。这里是丝路驿站、商贸重镇，上世纪80年代，同心县就是宁夏的商贸流通试验区，被称为“小广州”“旱码头”。这里民风淳朴，人民热情好客，2022年同心县被命名为“全国民族团结进步示范县”。

Tongxin County has been a place where multiple ethnic groups have lived together, influenced each other, and lived in harmony since ancient times. Exchange and integration, harmony and smoothness, and open development have always been the main melody on this land. This is the Silk Road Station and a commercial center. In the 1980s, Tongxin County was the commercial circulation experimental zone in Ningxia, known as the "Little Guangzhou" and "Dry Wharf". Here, the people have a simple and honest customs, and the people are warm and hospitable. In 2022, Tongxin County was named the "National Demonstration County for Ethnic Unity and Progress".



#### 政务服务优质

#### High quality government services

同心县紧紧围绕打造优质政务服务环境、在简政放权、放管结合、优化服务各方面纵深推进，着力改善营商环境，切实降低招商企业的投资成本，重商、亲商、富商、安商的社会氛围已经形成，确立了投资同心的比较优势。

Tongxin County is closely promoting the creation of a high-quality government service environment, streamlining administration and delegating power, combining decentralization with management, and optimizing services. It is striving to improve the business environment and effectively reduce the investment costs of investment attracting enterprises. A social atmosphere of valuing business, pro business, wealthy business, and safe business has been formed, establishing the comparative advantage of investment Tongxin.





# 03

## 重点产业

### KEY INDUSTRIES

#### 现代化工产业

##### MODERN CHEMICAL INDUSTRY

围绕煤化工和石油化工，形成选煤、炼焦、煤气制甲醇、合成氨等上下游产业链协同发展，同步建设煤矸石综合利用项目。以银山能源、同德爱心煤化工为基础，培育一批创新能力强、具有核心竞争力的骨干企业，形成一批布局合理、特色鲜明、新旧动能转换、工业转型升级、实现高质量发展的重点产业；韦州煤矿矿区配套选煤厂总规划规模990万吨/年，其中永安选煤厂330万吨/年、韦二选煤厂270万吨/年、韦三选煤厂150万吨/年、韦四选煤厂240万吨/年。依据市场需求统筹开发，生产煤炭产品主要供应相关配套产业项目。重点引进石油化工、煤化工、煤炭资源开发企业。

Focusing on coal chemical and petrochemical industries, a coordinated development of upstream and downstream industrial chains such as coal preparation, coking, gas to methanol, and synthetic ammonia will be formed, and comprehensive utilization projects of coal gangue will be constructed simultaneously. Based on Yinshan Energy and Tongde Love Coal Chemical, cultivate a group of backbone enterprises with strong innovation ability and core competitiveness, and form a group of key industries with reasonable layout, distinct characteristics, conversion of old and new kinetic energy, industrial transformation and upgrading, and achieving high-quality development; The total planned scale of the supporting coal preparation plant in the Weizhou coal mining area is 9.9 million tons/year, including 3.3 million tons/year for Yong'an Coal Preparation Plant, 2.7 million tons/year for Wei'er Coal Preparation Plant, 1.5 million tons/year for Weisan Coal Preparation Plant, and 2.4 million tons/year for Weisi Coal Preparation Plant. Based on market demand, coordinated development is carried out, and the production of coal products is mainly supplied to related supporting industrial projects. Focus on introducing petrochemical, coal chemical, and coal resource development enterprises.





## 光伏产业 PHOTOVOLTAIC INDUSTRY

同心县全年日照充足，阴雨天气少、大气透明度好、太阳能辐射强度高，年均太阳辐射量5642MJ/m<sup>2</sup>，年均日照小时数2710小时，年日照百分率64%，属于“资源很丰富”区域，太阳能开发利用潜力巨大。

光伏项目主要为“沙戈荒”光伏大基地、集中式“光伏+”发电项目、分布式光伏发电项目、风光互补项目，各乡镇均有分布，总计规划光伏容量为1710万千瓦，其中集中式光伏发电规划容量为1686万千瓦，分布式光伏发电规划容量为24.6万千瓦。

以清洁能源产业园为依托，一体化发展拉晶、切片、光伏组件、逆变器、支架、光伏电缆、能源电子产业等光伏材料组件产业，打造光伏全产业链。重点引进电池储能、能源组件、电子元件等领域高端装备制造项目，不断建链延链，推动全县工业高质量发展。

Tongxin County has abundant sunshine throughout the year, with few rainy and cloudy weather, good atmospheric transparency, and high solar radiation intensity. The average annual solar radiation is 5642MJ/m<sup>2</sup>, with an average annual sunshine hours of 2710 hours and an annual sunshine percentage of 64%. It belongs to the "resource rich" area and has great potential for solar energy development and utilization. Photovoltaic projects mainly include the "Sagohuang" photovoltaic base, centralized "photovoltaic+" power generation project, distributed photovoltaic power generation project, and wind solar complementary project, which are distributed in various townships. The total planned photovoltaic capacity is 17.1 million kilowatts, of which the planned capacity for centralized photovoltaic power generation is 16.86 million kilowatts and the planned capacity for distributed photovoltaic power generation is 246000 kilowatts. Relying on the clean energy industrial park, we will integrate the development of photovoltaic material component industries such as crystal pulling, slicing, photovoltaic modules, inverters, brackets, photovoltaic cables, energy electronics, and create a complete photovoltaic industry chain. We will focus on introducing high-end equipment manufacturing projects in fields such as battery energy storage, energy components, and electronic components, continuously building and extending the chain, and promoting high-quality industrial development throughout the county.





## 风电产业 WIND POWER INDUSTRY

同心县风能资源丰富，开发潜力较大，大部分地区90米高度处风速在5.0~7.25米/秒，风功率密度介于200~375瓦/平方米。风电产业主要为风光互补项目及集中式风电项目，总计规划风电容量为86万千瓦，其中风光互补项目中，风电总计规划容量为80.5万千瓦；集中式风电项目规划容量为5.5万千瓦。我县将大力发展塔筒产业，重点引进叶片、机舱罩、变流器、底座铸件、电缆等生产项目，推动再生能源、储能、新能源应用等业态发展，打造具有区域优势的绿色能源供应基地及成套设备生产基地。

Tongxin County is rich in wind energy resources and has great development potential. In most areas, wind speeds range from 5.0 to 7.25 meters per second at a height of 90 meters, and wind power density ranges from 200 to 375 watts per square meter. The wind power industry mainly consists of wind and solar complementary projects and centralized wind power projects, with a total planned wind power capacity of 860000 kilowatts. Among the wind and solar complementary projects, the total planned wind power capacity is 805000 kilowatts; The planned capacity of centralized wind power projects is 55000 kilowatts. Our county will vigorously develop the tower tube industry, focusing on introducing production projects such as blades, engine hood, converters, base castings, and cables, promoting the development of renewable energy, energy storage, and new energy applications, and creating a green energy supply base and complete equipment production base with regional advantages.



## 现代纺织产业 MODERN TEXTILE INDUSTRY

同心县羊绒资源丰富，是全国最大的羊绒集散地和加工基地之一，年经销原绒约占全国产绒量的二分之一，约占世界产绒量的三分之一，拥有“中国同心国际羊绒集散城”美誉。近年来，我县积极引导羊绒企业加大技术改造力度，加大高支羊绒纱、纯羊绒纱、多纤混纺交织纱线开发和生产，发展绒毛清洗、毛纺分梳、纺纱、织纱等配套产业。推行“互联网+纺织”模式，拓展延伸发展服装、家纺、毛针织、功能性纺织品等终端产品制造业和纽扣、辅料等上下游配套产业。重点引进以精深加工龙头企业为带动，打造从原料到纱锭、纱线、面料、成衣及家纺的全产业链纺织工业体系。

Tongxin County is rich in cashmere resources and one of the largest cashmere distribution centers and processing bases in China. Its annual distribution of raw cashmere accounts for about half of the country's cashmere production and about one-third of the world's cashmere production, earning it the reputation of "China Tongxin International Cashmere Distribution City". In recent years, our county actively guides cashmere enterprises to increase their technological transformation efforts, increase the development and production of high count cashmere yarn, pure cashmere yarn, and multi fiber blended yarn, and develop supporting industries such as pile cleaning, wool spinning carding, spinning, and weaving. Promote the "Internet+Textile" model, expand and expand the development of terminal product manufacturing industries such as clothing, home textiles, wool knitting, functional textiles, and upstream and downstream supporting industries such as buttons and accessories. Focusing on introducing leading enterprises in precision and deep processing, we aim to create a full industrial chain textile industry system from raw materials to spindle, yarn, fabric, clothing, and home textiles.





## 新材料产业 NEW MATERIAL INDUSTRY

发展天然石膏、熟料水泥、减水剂等新型建筑材料，依托纯苯、烯烃资源，大力发展尼龙及配套材料、橡塑材料。我县石膏资源储备量50.5亿吨，可加快推进固体废物综合利用，促进节能、节材、高品质新型绿色建筑材料发展。重点引进洗脱苯、甲醇、合成氨、环保溶剂等化工新材料及石膏深加工等新型建筑材料生产项目。

Developing new building materials such as natural gypsum, clinker cement, and water reducing agents, relying on pure benzene and olefin resources, vigorously developing nylon and supporting materials, rubber and plastic materials. Our county has a reserve of 5.05 billion tons of gypsum resources, which can accelerate the comprehensive utilization of solid waste and promote the development of energy-saving, material saving, and high-quality new green building materials. Focus on introducing new chemical materials such as benzene, methanol, synthetic ammonia, environmentally friendly solvents, and new building material production projects such as gypsum deep processing.



## 枸杞产业 GOUQI CHANYE

开展枸杞有机种植、枸杞保鲜、枸杞精深加工和全利用等关键技术研发，支持应用酶促生物转化、生物发酵、协同加工等技术，实现枸杞原料中活性多糖、糖肽、核苷、有机酸等功能高值化利用，开发以枸杞为原辅料的健康食品、保健食品、药食同源食品、生物药品等高附加值产品。重点引进有机枸杞规模企业和枸杞芽茶、干果、冻果、酵素、枸杞糖等深加工项目。

We will carry out research and development on key technologies such as organic cultivation, preservation, deep processing, and full utilization of goji berries. We will support the application of technologies such as enzymatic biotransformation, biological fermentation, and collaborative processing to achieve the high-value utilization of active polysaccharides, glycopeptides, nucleosides, organic acids, and other functions in goji berries raw materials. We will also develop high-value added products such as health food, health food, medicinal food homologous foods, and biopharmaceuticals using goji berries as raw materials. Focus on introducing organic goji berry scale enterprises and deep processing projects such as goji berry bud tea, dried fruits, frozen fruits, enzymes, goji berry sugar, etc.





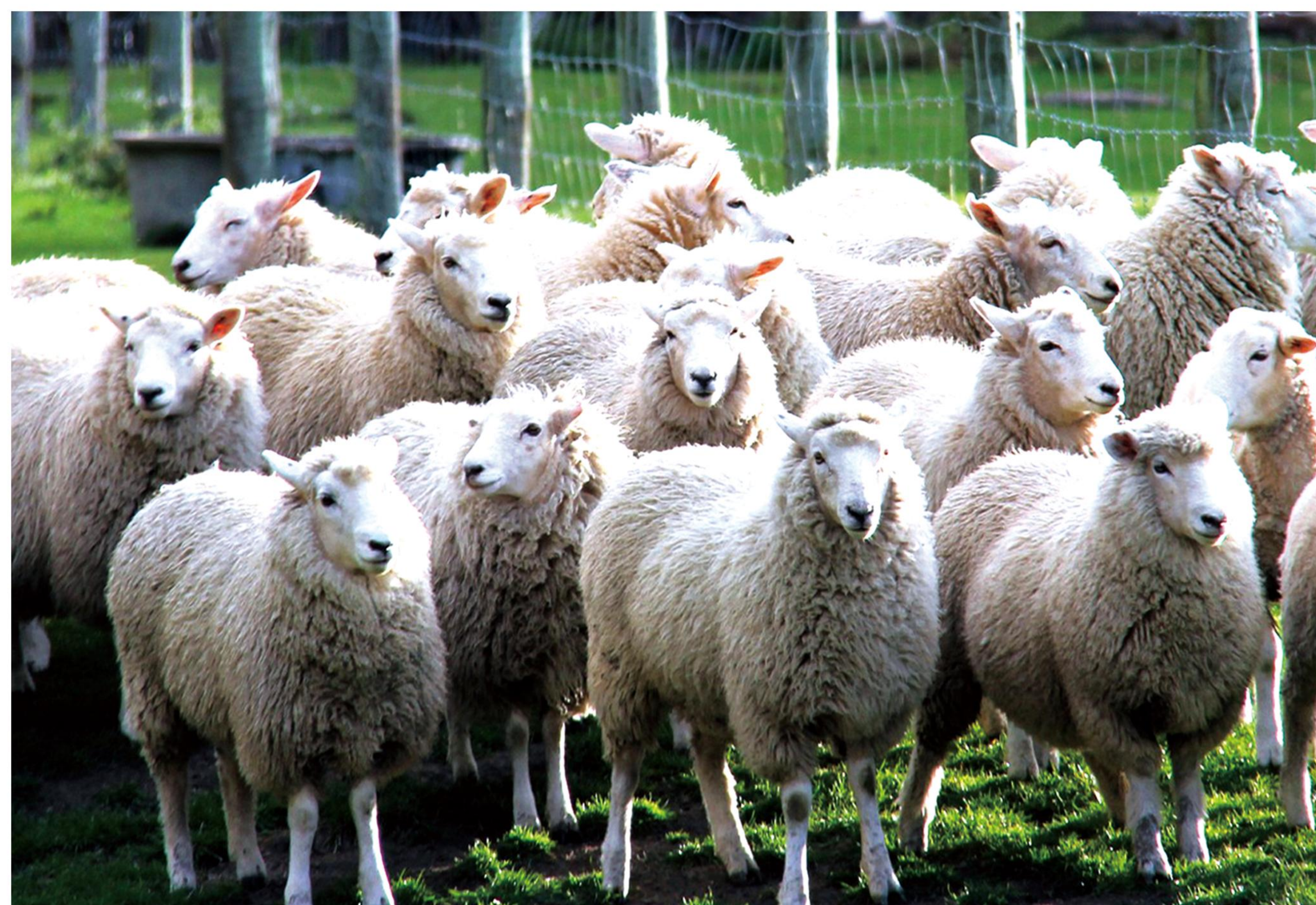
## 肉牛、滩羊、奶牛产业

BEEF CATTLE, TAN SHEEP, AND DAIRY INDUSTRY

同心县发展现代畜牧业具有较好的区位优势、资源优势和广泛的群众基础，得益于独特的气候、土壤、饮水环境，产出的牛羊肉肉质细嫩，无膻腥味，含脂率低，不饱和脂肪酸含量较高，矿物质元素种类丰富。肉牛饲养量达到25万头、滩羊饲养量达到230万只，安格斯牛养殖项目落户同心。

围绕肉牛、滩羊的养殖、改良等，加快建设繁育基地和现代产业园，积极推行人畜分离和出户入场，推进养殖产业集聚、集约、集群发展，提高产业发展集中度。引进现代冷鲜加工工艺、设备，开发速冻、调理、熟食及排酸肉等精深产品，提高分级加工、分割包装比重，提升精深加工水平，开拓高端市场，实现优质优价，提高经营效益。培育奶牛产业链，发展奶牛养殖，围绕养殖、饲草加工配送、奶源供应、挤奶设备制造、乳制品加工等，实施一批养殖项目和生产加工项目。重点引进肉牛、肉羊规模养殖场项目和肉食深加工企业。

The development of modern animal husbandry in Tongxin County has good geographical advantages, resource advantages, and a broad public base. Thanks to the unique climate, soil, and drinking water environment, the beef and mutton produced are delicate and tender, without fishy smell, with low fat content, high content of unsaturated fatty acids, and rich types of mineral elements. The number of beef cattle raised has reached 250000, and the number of Tan sheep raised has reached 2.3 million. The Angus cattle breeding project has settled in Tongxin. Accelerate the construction of breeding bases and modern industrial parks around the breeding and improvement of beef cattle and Tan sheep, actively promote the separation of humans and livestock, and promote the agglomeration, intensification, and cluster development of the breeding industry, and improve the concentration of industrial development. Introduce modern cold fresh processing technology and equipment, develop deep products such as quick freezing, conditioning, cooked food and sour meat, increase the proportion of graded processing and split packaging, improve the level of deep processing, open up high-end markets, achieve high quality and good price, and improve business efficiency. Cultivate the dairy industry chain, develop dairy farming, and implement a batch of breeding and production processing projects around farming, forage processing and distribution, milk supply, milking equipment manufacturing, dairy product processing, etc. Focus on introducing large-scale breeding farm projects for beef cattle and sheep, as well as meat deep processing enterprises.





## 玉米产业

YUMI CHANYE

2023年玉米种植面积50万亩以上，产量35万吨以上。围绕食用玉米、饲用玉米、工业原料等，开发玉米面、青玉米等粗粮食品，做大做强玉米饲料加工，引进以玉米为原料，经脱皮、脱粒、磨浆工艺处理，使用 $\alpha$ -淀粉酶降解，添加复合稳定剂，科学调配，高压均质乳化，生产出均一稳定的乳脂饮料——甜玉米饮料、健康食品、淀粉、麦芽糖、玉米油、纤维蛋白饲料及玉米胚芽粕等中端产品生产企业。

In 2023, the corn planting area will be over 500000 acres, with a yield of over 350000 tons. Developing coarse grain foods such as corn flour and green corn, focusing on edible corn, feed corn, industrial raw materials, etc., expanding and strengthening the processing of corn feed, introducing corn as raw material, and processing it through peeling, threshing, and grinding processes  $\alpha$ - Starch enzyme degradation, addition of composite stabilizers, scientific formulation, high-pressure homogenization emulsification, and the production of uniform and stable milk fat beverages - sweet corn beverages, health foods, starch, maltose, corn oil, fiber protein feed, and corn germ meal and other mid-range product production enterprises.



## 马铃薯产业

POTATO INDUSTRY

合理布局，加快马铃薯生产基地建设，推动马铃薯种子培育、种植、采收一体化发展。实施马铃薯淀粉、全粉、粉条生产加工项目，开发马铃薯饼干、薯片、薯条等休闲食品，延伸产业链，提升附加值。引进马铃薯主食化专用型品种—夏波蒂、大西洋、麦肯1号，与辛普劳（中国）、百事（中国）和麦肯（中国）食品有限公司建立稳定的合作关系。引进示范推广青薯9号、希森6号、V7、沃土5号等马铃薯优良品种。在下马关建立专用型马铃薯基地，以及原种、一级种基地3000亩。轮作到茬春小麦2000亩。

Reasonably layout, accelerate the construction of potato production bases, and promote the integrated development of potato seed cultivation, planting, and harvesting. Implement potato starch, whole flour, and noodle production and processing projects, develop snack foods such as potato biscuits, potato chips, and potato chips, extend the industrial chain, and increase added value. Introduce specialized potato varieties for staple food production - Shapoti, Atlantic, and Macon 1, and establish stable cooperative relationships with Simplot (China), PepsiCo (China), and Macon (China) Food Co., Ltd. Introduce and promote excellent potato varieties such as Qingshu 9, Xisen 6, V7, and Wotu 5 through demonstration. Establish a dedicated potato base in Xiamaguan, as well as 3000 acres of original and primary seed bases. Rotate to harvest 2000 acres of spring wheat.





## 冷凉蔬菜产业

COLD VEGETABLE INDUSTRY

2022年，全县红葱种植面积4.66万亩、黄花菜种植面积2275亩、芦笋种植面积2000亩。2023年重点围绕红葱、芦笋、黄花菜、菌菇等特色农副产品，推进种植、加工、冷链、烘干、运输一体发展。投资3.6亿元，新建1400余座设施温棚，打造小杂粮加工基地等，带动引进休闲食品、罐头、饼干、奶茶饮料等开发生产企业，构建特色蔬菜产业体系。推进专用肥料、保鲜、真空包装等专用材料生产。

In 2022, the county will have a planting area of 46600 acres of scallions, 2275 acres of cauliflower, and 2000 acres of asparagus. In 2023, we will focus on promoting the integration of planting, processing, cold chain, drying, and transportation of characteristic agricultural and sideline products such as scallions, asparagus, cauliflower, and mushroom. Invest 360 million yuan to build over 1400 facilities and greenhouses, build small grain processing bases, and drive the introduction of leisure food, canned goods, biscuits, milk tea drinks and other development and production enterprises, and build a characteristic vegetable industry system. Promote the production of specialized materials such as fertilizers, preservation, and vacuum packaging.



## 电子商务产业

E-COMMERCE INDUSTRY

加快推进多层次的电子商务产业园建设，结合县域产业特色，构建包括数字经济、跨境电商、电商创业、孵化中心、直播工厂、网红主播打造等电子商务产业集聚发展平台，推动电商产业集群化发展，推进直播电商赋能线下实体经济发展，引导直播电商与城市生活、特色产业协同发展。

充分利用“大美同心”、832平台等，大力推进“互联网+”农产品出村进城工程，积极参与中国国际农产品交易会、国际薯业博览会，加强与麦肯食品、蓝威斯顿薯业、雪川农业集团、爱味客、百事食品（中国）等国内马铃薯产业链主企业合作。

Accelerate the construction of multi-level e-commerce industrial parks, combine the characteristics of county-level industries, and build e-commerce industry cluster development platforms including digital economy, cross-border e-commerce, e-commerce entrepreneurship, incubation centers, live streaming factories, and the creation of internet celebrity anchors. Promote the clustering development of e-commerce industry, empower offline real economy development with live streaming e-commerce, and guide the coordinated development of live streaming e-commerce with urban life and characteristic industries. Make full use of "Damei Tongxin", 832 platform, etc., vigorously promote the project of "Internet plus" agricultural products going out of the village and into the city, actively participate in the China International Agricultural Products Fair and the International Potato Industry Fair, and strengthen cooperation with major enterprises in the domestic potato industry chain, such as Macon Food, Lanweston Potato, Xuechuan Agricultural Group, Ivike, Pepsi Food (China).





## 现代物流 MODERN LOGISTICS

以专业化、标准化、智慧化为目标，建成桃山综合物流园、现代物流城，启动预旺物流园建设，组建大货车司机协会、物流协会，不断完善县乡村三级物流体系，重点发展城市配送、农村物流、冷链物流、电商物流、工业物流等，提升服务产业链供应链能力、物流组织效率和供应链管理水平和，推动物流业降本增效。

With the goal of professionalization, standardization, and intelligence, we will build Taoshan Comprehensive Logistics Park and Modern Logistics City, initiate the construction of Yuwang Logistics Park, establish a large truck driver association and logistics association, continuously improve the county-rural three-level logistics system, focus on developing urban distribution, rural logistics, cold chain logistics, e-commerce logistics, industrial logistics, etc., and improve the service industry chain supply chain capacity, logistics organization efficiency, and supply chain management level, Promote cost reduction and efficiency increase in the logistics industry.





## 文化旅游产业 CULTURAL TOURISM INDUSTRY

以全域旅游示范县创建为目标，以国家长征、长城文化公园建设等为载体，挖掘擦亮同心“红色”“绿色”旅游资源，推动民俗非遗文创产业发展，开展乡村休闲娱乐、民俗文化展览、地方风味餐饮、感受乡村生活等活动，打造具有地方特色的文旅体融合项目，延伸文旅产业链条。

With the goal of creating a comprehensive tourism demonstration county and using the construction of the National Long March and the Great Wall Cultural Park as carriers, we aim to explore and polish the concentric "red" and "green" tourism resources, promote the development of folk non heritage cultural and creative industries, carry out activities such as rural leisure and entertainment, folk culture exhibitions, local flavor catering, and experiencing rural life, create cultural and tourism integration projects with local characteristics, and extend the cultural and tourism industry chain.







## 装备制造产业

EQUIPMENT MANUFACTURING INDUSTRY

重点引进电池储能、能源组件、电子元件、电器电缆制造、风力发电机组、火电机组等生产项目，发展智能装备制造、智能终端产品等领域高端装备制造项目。目前上能电气5GW逆变器和英利（中国）1GW光伏组件项目已稳定运行，2023年追加投资，分别新建5GW逆变器和1GW光伏组件生产线，装备制造产业聚集效应初显。

Focus on introducing production projects such as battery energy storage, energy components, electronic components, electrical cable manufacturing, wind turbines, thermal power units, etc., and develop high-end equipment manufacturing projects in fields such as intelligent equipment manufacturing and intelligent terminal products. At present, the 5GW inverter project of Shangneng Electric and the 1GW photovoltaic module project of Yingli (China) have been operating stably. In 2023, additional investment will be made to build new 5GW inverter and 1GW photovoltaic module production lines, respectively. The agglomeration effect of the equipment manufacturing industry is beginning to emerge.



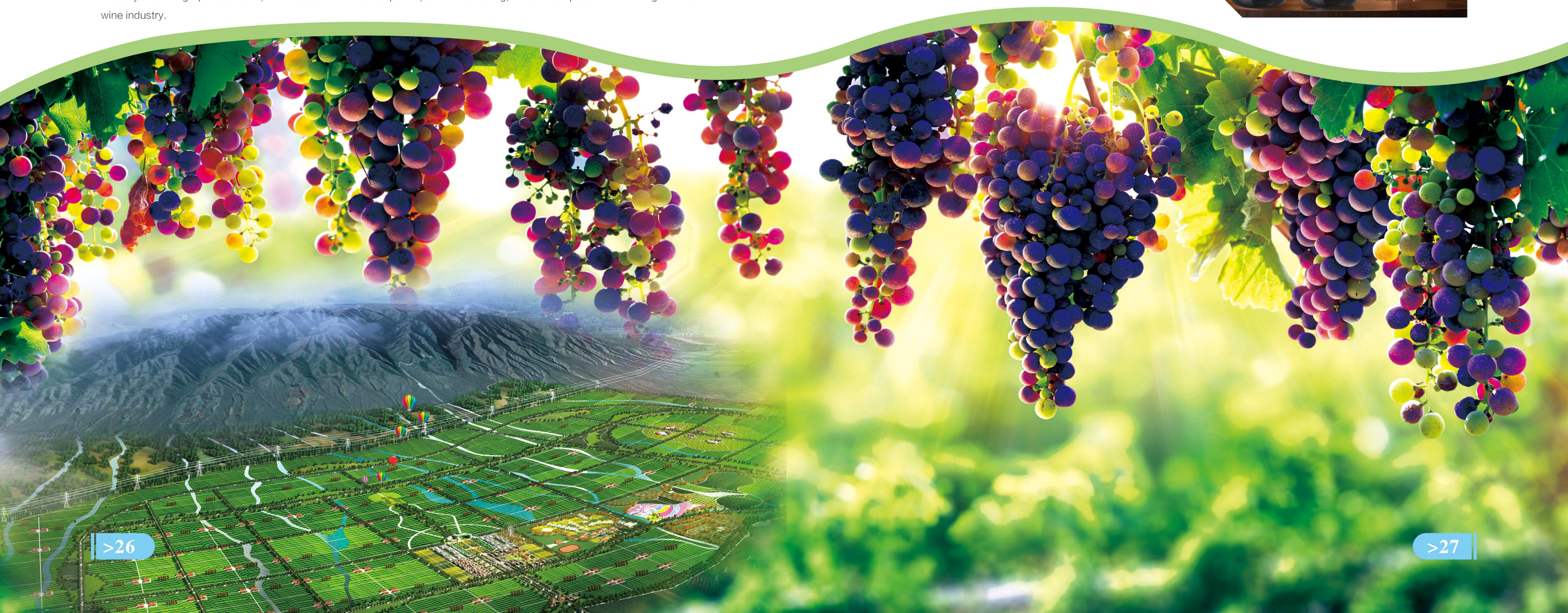


## 葡萄酒产业

WINE INDUSTRY

围绕构建现代葡萄酒产业体系、生产体系、经营体系和技术研发推广体系，推动葡萄酒产业高端化、绿色化、智能化、融合化、品牌化发展。开展葡萄酒加工副产品葡萄籽、葡萄皮渣、葡萄枝条的综合利用研究，开发能够满足不同人群的营养健康食品、保健品等系列高附加值产品。重点引进葡萄种植、酒品研发、酿酒全产业链企业，做优做强葡萄酒产业。

Focusing on building a modern wine industry system, production system, operation system, and technology research and development promotion system, we will promote the high-end, green, intelligent, integrated, and branded development of the wine industry. Carry out research on the comprehensive utilization of grape seeds, grape skin residue, and grape branches as by-products of wine processing, and develop a series of high value-added products that can meet the needs of different populations, such as nutritional and health foods and health products. We will focus on introducing enterprises in the entire industry chain of grape cultivation, wine research and development, and wine making, in order to optimize and strengthen the wine industry.





## 文冠果产业

WENGUAN FRUIT INDUSTRY

文冠果，是我国北方特有的一种优良木本食用油料树种。具有耐干旱、耐严寒、耐贫薄等高抗特性，其体内含有多种如齐墩果烷型五环三萜皂苷等优良活性物质，能显著改善记忆，缓解疲劳。文冠果籽含油量高，种子出油率30.8%。文冠果油不饱和脂肪占92%以上，其中：油酸52.8%、亚油酸39.4%。2022年，同心县累计种植文冠果36.2万亩，其中万亩以上连片种植基地6个，千亩以上示范基地20个。规划到2025年，全县文冠果种植面积达到40万亩，建成西北最大的文冠果种植基地。围绕食用油加工、茶叶、护手霜等产业链，推进生产加工。研发文冠果神经酸提取、利用枝条提取制作烫伤、风湿病药膏等技术和产品利用。重点引进文冠果茶、油、精油等系列深加工产品项目，培育和提升文冠果产品市场影响力。

Xanthoceras sorbifolia is an excellent woody edible oil tree species unique to northern China. It has high resistance characteristics such as drought resistance, cold resistance, and poverty resistance. Its body contains various excellent active substances such as oleanolane pentacyclic triterpenoid saponins, which can significantly improve memory and alleviate fatigue. The oil content of Xanthoceras sorbifolia seeds is high, with a seed oil yield of 30.8%. The unsaturated fat content of Xanthoceras sorbifolia oil is over 92%, including 52.8% oleic acid and 39.4% linoleic acid. In 2022, Tongxin County has planted a total of 362000 acres of Xanthoceras sorbifolia, including 6 contiguous planting bases of over 10000 acres and 20 demonstration bases of over 1000 acres. By 2025, the planting area of Xanthoceras sorbifolia in the county is planned to reach 400000 acres, and the largest Xanthoceras sorbifolia planting base in the northwest will be built. Promote production and processing around the industrial chain of edible oil processing, tea, and hand cream. Research and development of techniques and product utilization for extracting nerve acid from Xanthoceras sorbifolia, and extracting branches to produce scald and rheumatic ointment. Focus on introducing a series of deep processing product projects such as Wenguan fruit tea, oil, and essential oil, and cultivate and enhance the market influence of Wenguan fruit products.

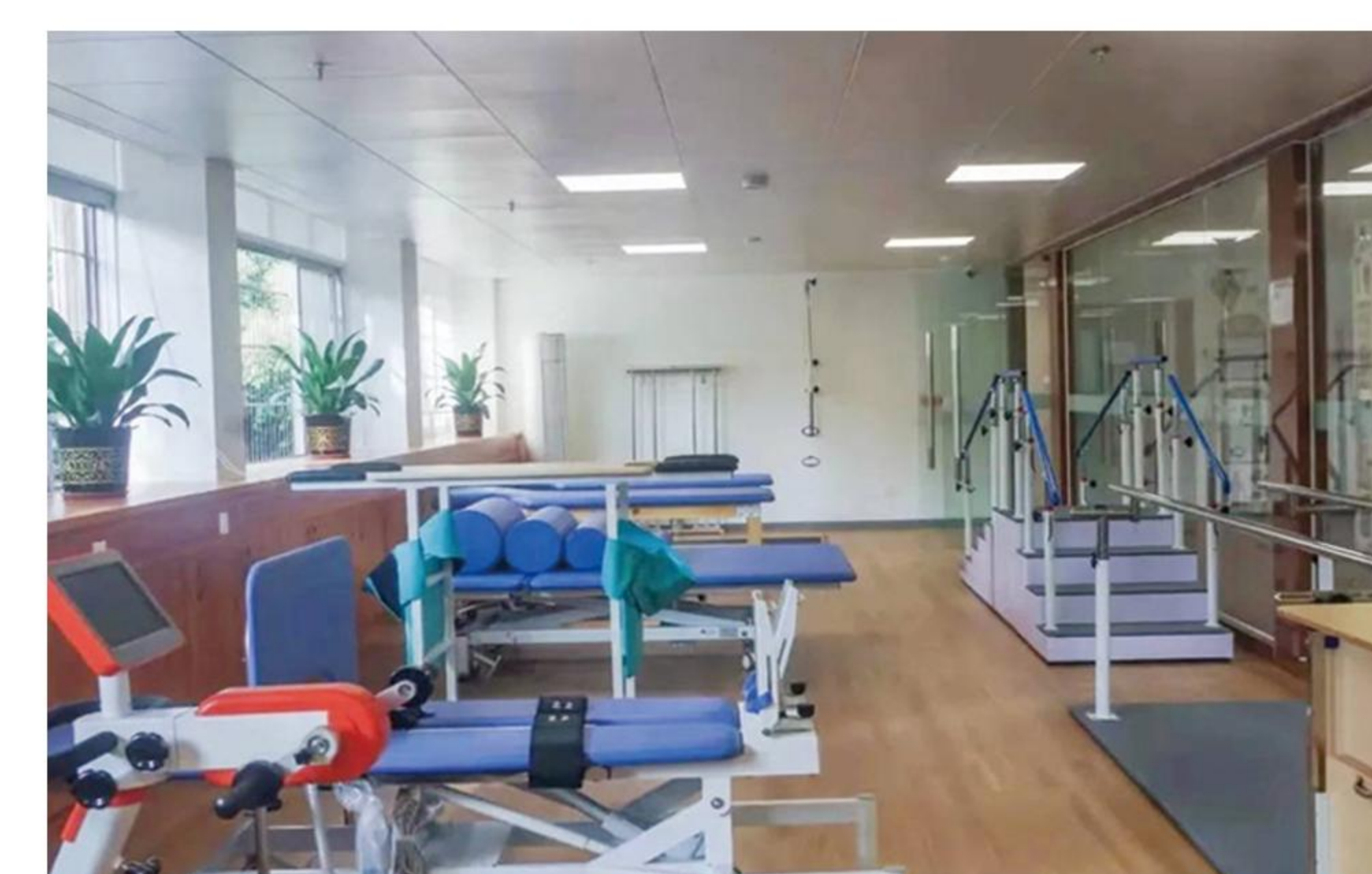


## 健康养老产业

HEALTH AND ELDERLY CARE INDUSTRY

依托现有养老服务资源（同心县综合养老服务中心总占地面积90362平方米（135.6亩），建筑面积34696平米，总投资10746万元，设计床位760张。），探索建设集全托、日托、助餐、医养结合、康养服务、便民服务和向下指导等功能于一体的社区养老综合体，建设社区居家“虚拟养老院”，探索开展家庭照护床位建设，发展“物业服务+养老服务”。

Relying on existing elderly care service resources (Tongxin County Comprehensive Elderly Care Service Center covers a total area of 90362 square meters (135.6 acres), a building area of 34696 square meters, a total investment of 107.46 million yuan, and a design of 760 beds), Explore the construction of a community elderly care complex that integrates functions such as full care, day care, meal assistance, medical and elderly care, health care services, convenience services, and guidance for the elderly. Build a community home "virtual elderly care home", explore the construction of family care beds, and develop "property services+elderly care services".





# 04

## 承接平台

### UNDERTAKING PLATFORM

### 宁夏同心工业园区

宁夏同心工业园区是自治区政府2012年批准设立的自治区级工业园区，是我县实施产业富县战略、壮大县域经济实力、助力乡村振兴的重要平台。园区由清洁能源产业园、精细化工产业园、羊绒产业园三个区块组成，重点发展清洁能源装备制造和农副特色产品加工、现代精细化工、羊绒纺织产业，是国家级小型微型企业创业创新示范基地。园区规划面积508公顷，现有入园企业83家，投产63家，规模以上企业32家，吸纳近3000人就业。2022年完成工业总产值74.89亿元，同比增长16.3%。

Ningxia Tongxin Industrial Park is an autonomous region level industrial park approved by the Autonomous Region Government in 2012. It is an important platform for our county to implement the strategy of enriching the county through industry, strengthen the county's economic strength, and assist in rural revitalization. The park is composed of three blocks: Clean Energy Industrial Park, Fine Chemical Industrial Park, and Cashmere Industrial Park, with a focus on developing clean energy equipment manufacturing and processing of agricultural and sideline characteristic products, modern fine chemical industry, and cashmere textile industry. It is a national level small and micro enterprise entrepreneurship and innovation demonstration base. The planned area of the park is 508 hectares, with 83 enterprises entering the park, 63 in operation, and 32 enterprises above designated size, attracting nearly 3000 people for employment. In 2022, the total industrial output value was 7.489 billion yuan, a year-on-year increase of 16.3%.

### 精细化工产业园

宁夏同心工业园区精细化工产业园位于红寺堡区太阳山镇，规划面积229.66公顷，近年来，相继配套建成道路、给排水、双电源供电、天然气供气、网络通信、消防站、污水处理厂等基础设施，累计完成投资3.5亿元。2020年12月，被自治区认定为“自治区化工集中区”，2022年12月实现精细化工基地安全风险等级C级标准。

现有入园企业9家，其中化工企业8家（投产3家，在建5家），装备制造企业1家，2022年完成工业产值25.92亿元。园区发展始终坚持生态优先、绿色发展的思路，实现了经济发展与环境保护相互促进，全力打造百亿元级产值板块。

The Ningxia Tongxin Industrial Park Fine Chemical Industry Park is located in Taiyangshan Town, Hongsibao District, with a planned area of 229.66 hectares. In recent years, it has successively built infrastructure such as roads, water supply and drainage, dual power supply, natural gas supply, network communication, fire stations, and sewage treatment plants, with an accumulated investment of 350 million yuan. In December 2020, it was recognized as the "Autonomous Region Chemical Concentration Zone" by the autonomous region, and in December 2022, it achieved the C-level safety risk level standard for fine chemical bases. There are currently 9 enterprises entering the park, including 8 chemical enterprises (3 in operation and 5 under construction) and 1 equipment manufacturing enterprise. By 2022, the industrial output value will reach 2.592 billion yuan. The development of the park has always adhered to the concept of ecological priority and green development, achieving mutual promotion between economic development and environmental protection, and striving to create a billion yuan output value sector.





# 05

## 优惠政策

### PREFERENTIAL POLICY

#### 产业政策 industrial policy

◆从2017年起实施新一轮工业企业技术改造计划，连续3年每年安排资金3亿元，对符合条件的重点技术改造项目，采取按贷款基准利率全额贴息、以奖代补等方式给予支持。(宁党发〔2017〕1号)

Starting from 2017, a new round of industrial enterprise technology transformation plan will be implemented, with an annual allocation of 300 million yuan for three consecutive years. For key technology transformation projects that meet the conditions, full interest discounts will be provided according to the loan benchmark interest rate, and subsidies will be provided in lieu of subsidies. (Ning Zheng Fa [2017] No. 1)

◆整合设立2亿元技改综合奖补资金。对重点技改项目予以扶持，重点支持现代煤化工、轻纺、冶金等行业开发高端产品，延伸产业链，提高附加值。(宁党发〔2017〕26号)

Integrate and establish a comprehensive subsidy fund of 200 million yuan for technological transformation. Provide support for key technological transformation projects, with a focus on supporting the development of high-end products in industries such as modern coal chemical, light textile, and metallurgy, extending the industrial chain, and increasing added value. (Ningdangfa [2017] No. 26)

◆对进入国家和自治区级制造业行业领先示范企业的分别给予400万元、200万元奖励。(宁党发〔2017〕26号)

Rewards of 4 million yuan and 2 million yuan will be given to leading demonstration enterprises in the manufacturing industry at the national and autonomous region levels, respectively. (Ningdangfa [2017] No. 26)

◆规上工业企业研发投入占主营业务收入达到3%的，按其新增研发投入的10%、最高不超过500万元给予支持。(宁党发〔2017〕26号)

For industrial enterprises above designated size whose R&D investment accounts for 3% of their main business income, support will be provided at a rate of 10% of their newly added R&D investment, with a maximum of 5 million yuan. (Ningdangfa [2017] No. 26)

◆建立高新技术企业育库，对国家高新技术企业来宁设立法人企业，给予50万元研发资金支持，成立期满1年后推荐申报国家高新技术企业；对整体迁入我区的视同首次认定，给予100万元支持。(宁党发〔2017〕26号)

Establish a high-tech enterprise breeding base, provide 500000 yuan of research and development funding support for national high-tech enterprises to establish legal entities in Nanjing, and recommend applying for national high-tech enterprises one year after the establishment period expires; The overall relocation into our district is considered as the first recognition and will be supported by 1 million yuan. (Ningdangfa [2017] No. 26)

◆支持区内企业、科研院所、高校等与区外科研力量，紧盯产业和市场前沿，开展定向研发、联合攻关，凡列入自治区重点研发计划的，在预算控制总额内，给予研发投入30%以内的支持；对突破重大关键技术、形成较大产业规模的优先给予支持。(宁党发〔2017〕26号)

◆ Support enterprises, research institutes, universities, and other surgical research forces in the region, closely monitor the forefront of the industry and market, carry out targeted research and development, and joint research and development. For those included in the key research and development plan of the autonomous region, support within 30% of the total budget control amount will be given for research and development investment; Priority support will be given to breakthroughs in major key technologies and the formation of larger industrial scales. (Ningdangfa [2017] No. 26)

◆鼓励企业与高校、科研院所联合建立产业协同创新中心，支持创建国家和自治区级制造业(产业)创新中心，获批后分别给予1000万元、500万元奖励(宁党发〔2017〕26号)

Encourage enterprises to jointly establish industrial collaborative innovation centers with universities and research institutes, and support the creation of national and autonomous region level manufacturing (industry) innovation centers. After approval, reward 10 million yuan and 5 million yuan respectively (Ningdangfa [2017] No. 26)



# 06

## 要素保障

### ELEMENT GUARANTEE

#### 宁夏电网销售电价表

Ningxia Power Grid Sales Electricity Price Table

单位：元/千瓦时（含税）

用电分类		电度电价		
		不满1千伏	1-10千伏	35-110千伏以下
一、居民生活用电				
一户一表	月用电量170千瓦时及以下	0.4486		
	月用电量171-260千瓦时	0.4986		
	月用电量261千瓦时及以上	0.7486		
合表用户		0.4986	0.4986	
二、农业生产用电		0.4730	0.4630	0.4530
其中：农业排灌用电		0.3020	0.2920	0.2820
多级扬水用电		0.106		
注：上表所列价格，居民生活用电和农业生产用电价格含国家重大水利工程建设基金0.1125分钱，居民生活用电价格含大中型水库移民后期扶持基金0.12分钱。				
依据：《自治区发展改革委关于调整我区目录销售电价相关事宜的通知》（宁发改价格（管理）[2021]738号）				

#### 宁夏电网峰谷分时电价表

Ningxia Power Grid Sales Electricity Price Table

单位：元/千瓦时（含税）

分类	电压等级	高峰	平段	低谷
农业生产用电	不满1千伏	0.7089	0.4730	0.2371
	1-10千伏	0.6939	0.4630	0.2321
	35千伏及以上	0.6789	0.4530	0.2271
注：1.此表峰谷电价按平段上、下浮50%计算，峰谷电价计算基础不含政府性基金及附加。 2.高峰时段：8:00-12:00 18:30-22:30；低谷时段：22:30-6:30；其余时段为平段。 3.自2021年10月1日起，铁合金、碳化硅、水泥、煤炭开采洗选四类行业时段划分，高峰时段：7:00-9:00 17:00-23:00；低谷时段：9:00-17:00；平段：23:00-次日7:00。				
依据：《自治区发展改革委关于调整我区目录销售电价相关事宜的通知》（宁发改价格（管理）[2021]738号） 《自治区发展改革委关于进一步完善峰谷分时电价机制的通知》（宁发改价格（管理）[2021]602号）				

#### 宁夏电网输配电电价表

Ningxia Power Grid Transmission and Distribution Tariff Table

单位：元/千瓦时（含税）

电价类别	电度电价（元/千瓦时）						基本电价	
	不满1千伏	1-10千伏	35千伏	110千伏	220千伏	330千伏	最大需量 (元/千瓦·月)	变压器容量 (元/千伏安·月)
工商业及 其它用电	0.2096	0.1896	0.1696				30	20
注：1.表中各电价含增值税、线损及交叉补贴。 2.表中各电价不含政府性基金及附加。具体征收标准：国家重大水利工程建设基金0.1125分钱； 3.大中型水库移民后期扶持基金0.12分钱；可再生能源电价附加1.9分钱。								
依据：《自治区发展改革委关于宁夏电网2021-2022年输配及销售电价有关事项的通知》（宁发改价格（管理）[2020]780号）								

#### 同心县集中供水现行水价表

Current Water Price Table for Centralized Water Supply in Tongxin County

地区	用水类别	现行基本水价	水资源税	污水处理费	合计水价
城市	居民生活用水	2.55元/m <sup>3</sup>	0.15	0.00	2.70元/m <sup>3</sup>
	行政事业用水	3.90元/m <sup>3</sup>	0.50	0.00	4.40元/m <sup>3</sup>
	工业用水	4.20元/m <sup>3</sup>	0.50	0.00	4.70元/m <sup>3</sup>
	建筑商业用水	5.00元/m <sup>3</sup>	0.50	0.00	5.50元/m <sup>3</sup>
	特种行业用水	6.40元/m <sup>3</sup>	10.00	0.00	16.40元/m <sup>3</sup>
	农村人饮用水	4.00元/m <sup>3</sup>	0.01	0.00	4.01元/m <sup>3</sup>
中西部	农村居民生活用水	中部4.10元/m <sup>3</sup> 西部4.00元/m <sup>3</sup>	0.01	0.00	中部4.11元/m <sup>3</sup> 西部4.01元/m <sup>3</sup>
东部	农村居民生活用水	4.00元/m <sup>3</sup>	0.01	0.00	4.01元/m <sup>3</sup>
	工业养殖业用水	4.92元/m <sup>3</sup>	0.01	0.00	4.93元/m <sup>3</sup>

#### 同心县工业用地出让最低标准

Minimum Standards for Industrial Land Transfer in Tongxin County

同心县	土地类型	土地价格
	工业用地	扶贫产业园、羊绒产业园7万元/亩、精细化工产业园3万元/亩 下马关农副产品科技示范园4万元/亩

#### 同心县天然气、蒸汽价格表

Tongxin County Natural Gas and Steam Price List

单位：元/立方米

天然气	居民：1.85	非居民：2.93（采暖季价格）	1.93（非采暖季价格）
蒸汽	精细化工产业园项目生产蒸汽由宁夏电投太阳山能源有限公司供给，蒸汽价格180元-200元		





吴新出管字〔2023〕第3504号

### 同心县投资促进服务中心

联系人：周建宝（13709532911）  
地址：宁夏吴忠市同心县豫海镇罗山路  
电话：0953-8721999  
传真：0953-8025688  
邮箱：txxtzcfwzx@163.com

### Tongxin County Investment Promotion Service Centre

Contact: Zhou Jianbao (13709532911)  
Address: Luo Shan Road, Yuhai town, Tongxin County, Wuzhong, Ningxia  
Tel: 0953-8721999  
Fax: 0953-8025688  
Email: txxtzcfwzx@163. Com